



Certificate of Analysis

CANNABUSINESS LABORATORIES, LLC

Customer:

CBZ Enterprises
938 Manchester St.
Lexington, KY 40508

Sample ID **260407547**
Order Number **CB260407002**
Sample Name **PNA-15T 040326A**

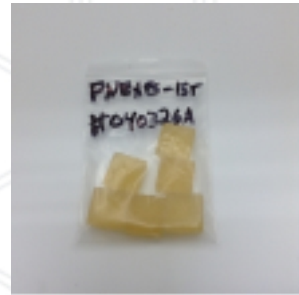
Received Date **4/7/2026**
Collection Date **4/5/2026**
COA Released **4/13/2026**
Comments

External Sample ID
Batch Number **040326A**
Product Type **Edible**
Sample Type **Edible**

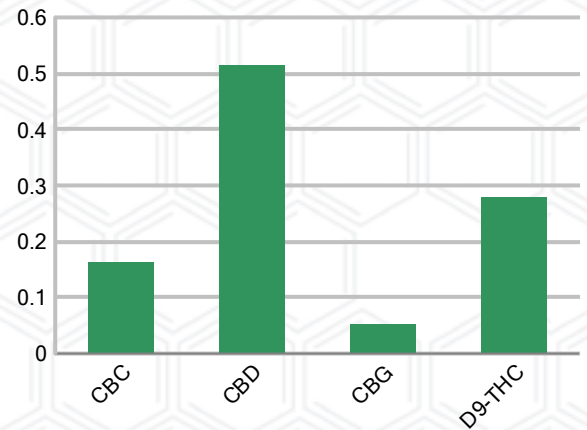
CANNABINOID PROFILE (Product Size = 5.8 g)

Analyte	LOQ (%)	% Weight	mg/g	mg/unit
CBC	0.01	0.163	1.630	9.45
CBD	0.01	0.516	5.159	29.92
CBDa	0.01	ND	ND	ND
CBDV	0.01	ND	ND	ND
CBG	0.01	0.053	0.533	3.09
CBGa	0.01	ND	ND	ND
CBN	0.01	ND	ND	ND
d8-THC	0.01	ND	ND	ND
d9-THC	0.01	0.279	2.794	16.21
THCa	0.01	ND	ND	ND
THCV	0.01	ND	ND	ND
Total Cannabinoids		1.012	10.12	58.70
Total Potential THC		0.279	2.794	16.21
Total Potential CBD		0.516	5.159	29.92
Total Potential CBG		0.053	0.533	3.09
Ratio of Total Potential CBD to Total Potential THC				1.85 : 1
Ratio of Total Potential CBG to Total Potential THC				0.19 : 1

SAMPLE IMAGE



CANNABINOIDS % Weight



*Total Cannabinoids refers to the sum of all cannabinoids detected.

*Total Potential CBD = (0.877 x CBDa) + CBD. *Total Potential THC = (0.877 x THCa) + THC. *Total Potential CBG = (0.877 x CBGa) + CBG.

*Total Potential THC/CBD are calculated to take into account the loss of an acid group during decarboxylation.



J. Hobgood
Laboratory Manager

SIGNATURE

Jamie Hobgood

LABORATORY MANAGER

04/13/2026 1:26 PM

DATE

This product has been tested by CannaBusiness Laboratories using validated testing methodologies and a quality system. Values reported relate only to the product tested. CannaBusiness Laboratories makes no claims as to the efficacy, safety, or other risks associated with any detected or non-detected levels of any compounds reported herein. This Certificate shall not be reproduced except in full, without the written permission of CannaBusiness Laboratories. Photo is of sample received by the lab and may vary from final packaging. The results apply to the sample as received.

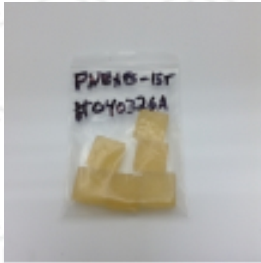


Certificate of Analysis

CANNABUSINESS LABORATORIES, LLC

Customer

CBZ Enterprises
938 Manchester St.
Lexington, KY 40508



Overall Batch Results	
Potency (mg/g)	

Sample Name: PNA-15T 040326A
Sample ID: 260407547
Order Number: CB260407002
Product Type: Edible
Sample Type: Edible
Received Date: 04/07/2026
Batch Number: 040326A
Collection Date: 04/05/2026

COA released: 04/13/2026 1:26 PM

Potency (mg/g)			
Date Tested: 04/09/2026	Method: CB-SOP-028	Instrument: HPLC-PDA#1(HempAnalyzer4)	

Analyte	Result	Units	LOQ	LOD	Limits	Pass / Fail
CBC (Cannabichromene)	0.163	%	0.010			
CBC (Cannabichromene) mg/g	1.630	mg/g	0.100			
CBD (Cannabidiol)	0.516	%	0.010			
CBD (Cannabidiol) mg/g	5.159	mg/g	0.100			
CBDa (Cannabidiolic Acid)	ND	%	0.010			
CBDa (Cannabidiolic Acid) mg/g	ND	mg/g	0.100			
CBDV (Cannabidivarin)	ND	%	0.010			
CBDV (Cannabidivarin) mg/g	ND	mg/g	0.100			
CBG (Cannabigerol)	0.053	%	0.010			
CBG (Cannabigerol) mg/g	0.533	mg/g	0.100			
CBGa (Cannabigerolic Acid)	ND	%	0.010			
CBGa (Cannabigerolic Acid) mg/g	ND	mg/g	0.100			
CBN (Cannabinol)	ND	%	0.010			
CBN (Cannabinol) mg/g	ND	mg/g	0.100			
D8-THC (D8-Tetrahydrocannabinol)	ND	%	0.010			
D8-THC (D8-Tetrahydrocannabinol) mg/g	ND	mg/g	0.100			
D9-THC (D9-Tetrahydrocannabinol)	0.279	%	0.010			
D9-THC (D9-Tetrahydrocannabinol) mg/g	2.794	mg/g	0.100			
THCa (Tetrahydrocannabinolic Acid)	ND	%	0.010			
THCa (Tetrahydrocannabinolic Acid) mg/g	ND	mg/g	0.100			
THCV (Tetrahydrocannabivarin)	ND	%	0.010			
THCV (Tetrahydrocannabivarin) mg/g	ND	mg/g	0.100			



J. Hobgood
Laboratory Manager

SIGNATURE

Jamie Hobgood

04/13/2026 1:26 PM

DATE

M of U = Measurement, NT = Not tested, ND = Not detected; LOQ = Limit of Quantitation; <LOQ = Detected; >ULOL = Above upper limit of linearity; CFU/g = Colony forming units per 1 gram; TNTC = Too numerous to count

This product has been tested by CannaBusiness Laboratories using validated testing methodologies and a quality system. Values reported relate only to the product tested. CannaBusiness Laboratories makes no claims as to the efficacy, safety, or other risks associated with any detected or non-detected levels of any compounds reported herein. This Certificate shall not be reproduced except in full, without the written permission of CannaBusiness Laboratories. Photo is of sample received by the lab and may vary from final packaging. The results apply to the sample as received.